

Timestamps L2 Virtual Thread - Reopening Schools and then what ?

Challenges and Opportunities in a European Context

Link to the full conversation video: <https://youtu.be/hZop9Gru3Ck>

0:00 **Welcome / Introductions / Zoom Explanations**

Facilitator:

John Mikton - IS Luxembourg

Panel:

2:30 Kim House (Bavarian International School)

KIM: Bavarian International School, Germany

EdTech Coach Primary School



Current

- 1000 students PK-12
- Students alternate between distance learning and on-site.
- 3rd week back
- Must be in groups of 15 max



Future

- Awaiting government decisions
- Making plans for possible closures and continuation of DL in August/winter

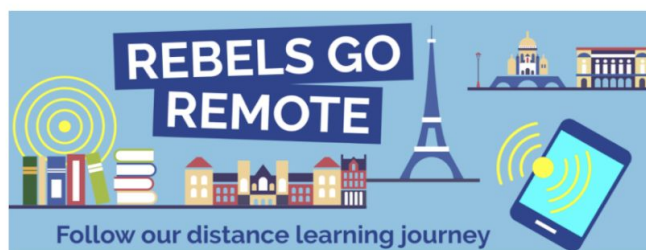


My Learning

- Feedback, communication and action
- Connection
- Learning for survival



6:56 Larry Love (American School of Paris)



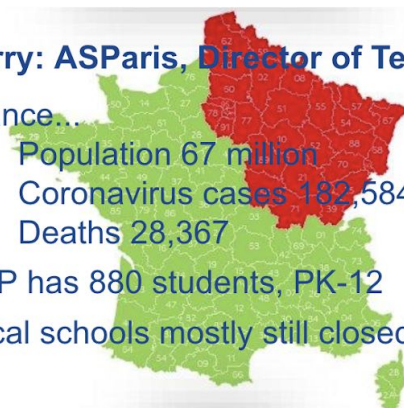
Larry: ASParis, Director of Technology

France...

- Population 67 million
- Coronavirus cases 182,584
- Deaths 28,367

ASP has 880 students, PK-12

Local schools mostly still closed



- Distance learning has been largely successful, but we're very aware of so much that we're missing vs F2F
- Teachers and instructional coaches have been great; innovative...
- Preparing to open for a few days in June, mostly with social/ emotional focus, closure (esp. those leaving)
- Planning for likely hybrid scenarios in the fall: challenging but also another opportunity for creativity
- Learning stretches:
 - this pandemic is so... global!
 - maximizing opportunities
 - keeping everyone constructive



11:17 Will Kirwood (Zurich International School)

Will

Ed Tech
1200+ kids
EY-12
Switzerland



The Return



- 3rd Week Back
- LS - all returned, some classes split
- MS (& G9) - Online academic, advisory 2hrs twice a week
- US - Online

Looking Ahead

- Government guidelines are one of the main factors in regards to planning for August
- Zurich - groups of 15 students & only up to G9



Lessons Learned



- Regular communication
- Maintaining personal connection
- Student action
- Amazing faculty & community
- Maintain the positive attitude and approach things with a smile

17:03 Chris Vincent (International School of Zug and Luzern)

Chris



Director of Technology
1250 Students, EY1 - 12
2 Campus
Riverside - HS 400
Zug - MS 320, PS 530
Switzerland

Continuity of Learning Plan



Current



Phased, 2 weekly approach:
PS 2 weeks A/Planning/B,
MS pm 90 minute optional activities

PS back 5 days but remain in HmRm Pods

MS 1 day 1 grade, essentially supporting online learning

What's Next



For last 2 weeks:
PS as per current

MS all in school, learning and activities by homeroom

HS possibly from 8 June depends on Canton carefully choreographed 8.5 days to maintain physical distancing

Lessons Learned



- Importance of communication and seeking input/feedback
- Important role that schools play in social/emotional support
- Talented faculty, fabulous community
 - [Better together](#)
 - [Don't worry about a thing](#)
- Easier to close then to reopen

25:56 Q&A to panelists & Open forum and conversation
WHAT's next, September is coming